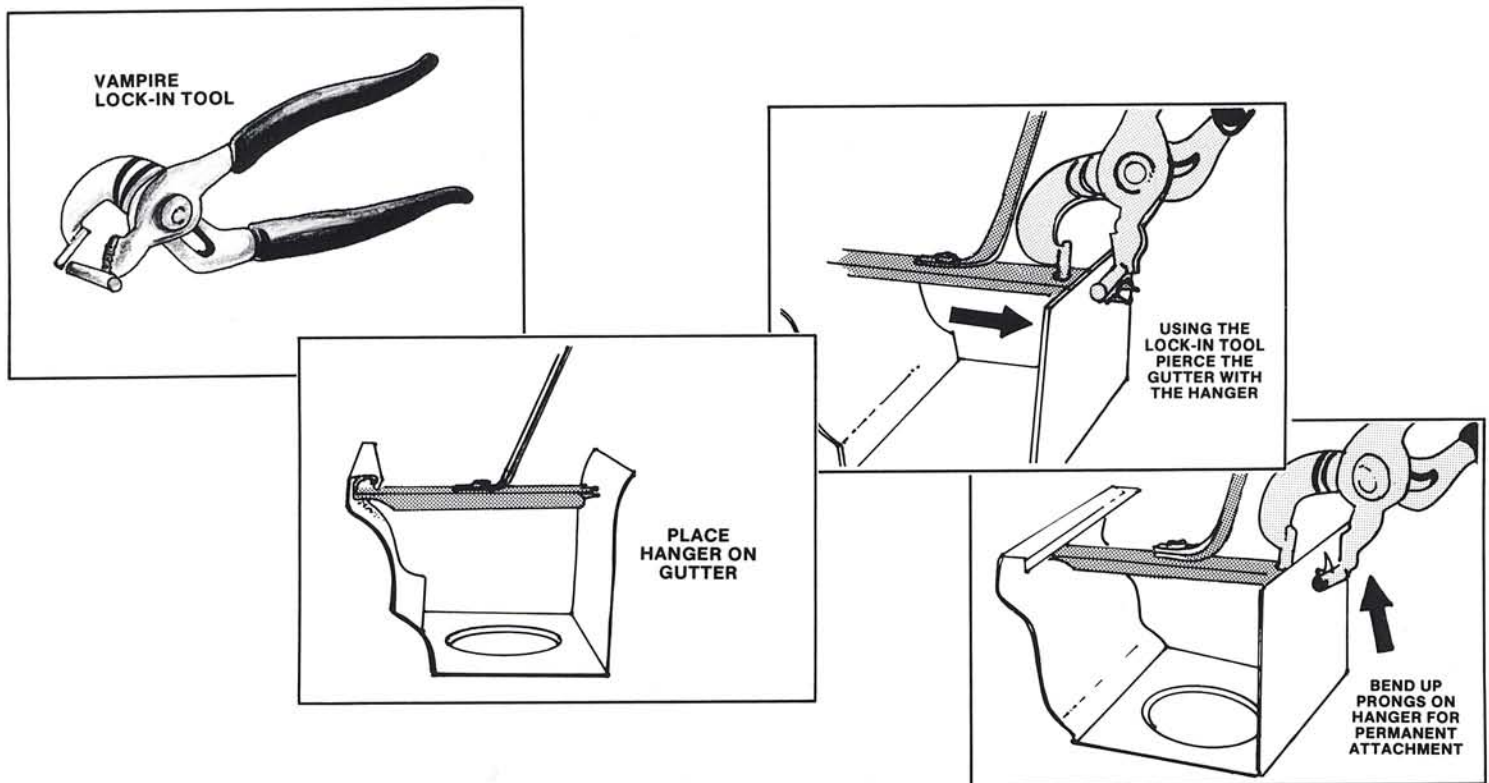


# HOW TO INSTALL THE VAMPIRE T-BAR HANGER

The Vampire T-Bar hangers are installed on the ground as the gutter emerges from your forming machine. The hanger is placed in position on 32" centers in the gutter. With the jaws on the third largest opening, the vampire tool's top jaw will go into the hole in the hanger. The bottom jaw will grasp the back of the gutter with the bar between the hanger's prongs and the top of the gutter. A simple squeeze of the vampire tool will allow the hanger's prongs to pierce the back of the gutter. Then using the tool as pliers, with the lower jaw under the prongs, bend the prongs up for a firm, permanent fit. With practice, the hangers will be installed as quickly as your machine will roll out the gutter.



While installing the vampires the strap can be bent up at a 90° angle. This will keep it out of your way during piercing. The strap can easily be bent to the desired angle when attaching the gutter to the roof. Wind ties may also be installed to prevent the gutter from swinging. As a finishing touch, the vampire straps can be painted to match the color of the roof.

[www.Petit  
Tool.com](http://www.PetitTool.com)

**Toll Free 1-800-662-5678**

**283-9626  
FAX (203) 283-6860**

P.O. Box 206 • 1387 Waterbury Rd. • Thomaston, CT 06787